

Green Growth from a Natural Capital Perspective in Lancang-Mekong

Tracy A. Farrell, Regional Director

CI Greater Mekong Program

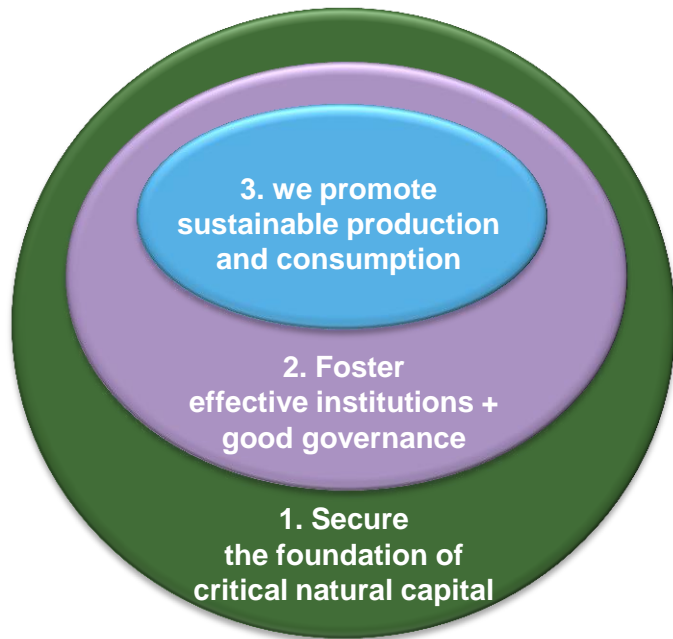
ADB GMS: Workshop on Green Growth March 23, 24, 2017

CONSERVATION
INTERNATIONAL



Natural systems are vital for people

Healthy, Sustainable Societies



help society adopt the conservation of nature as the centerpiece of development...

distribute nature's benefits equitably

inspire stewardship of nature

Nature's Benefits

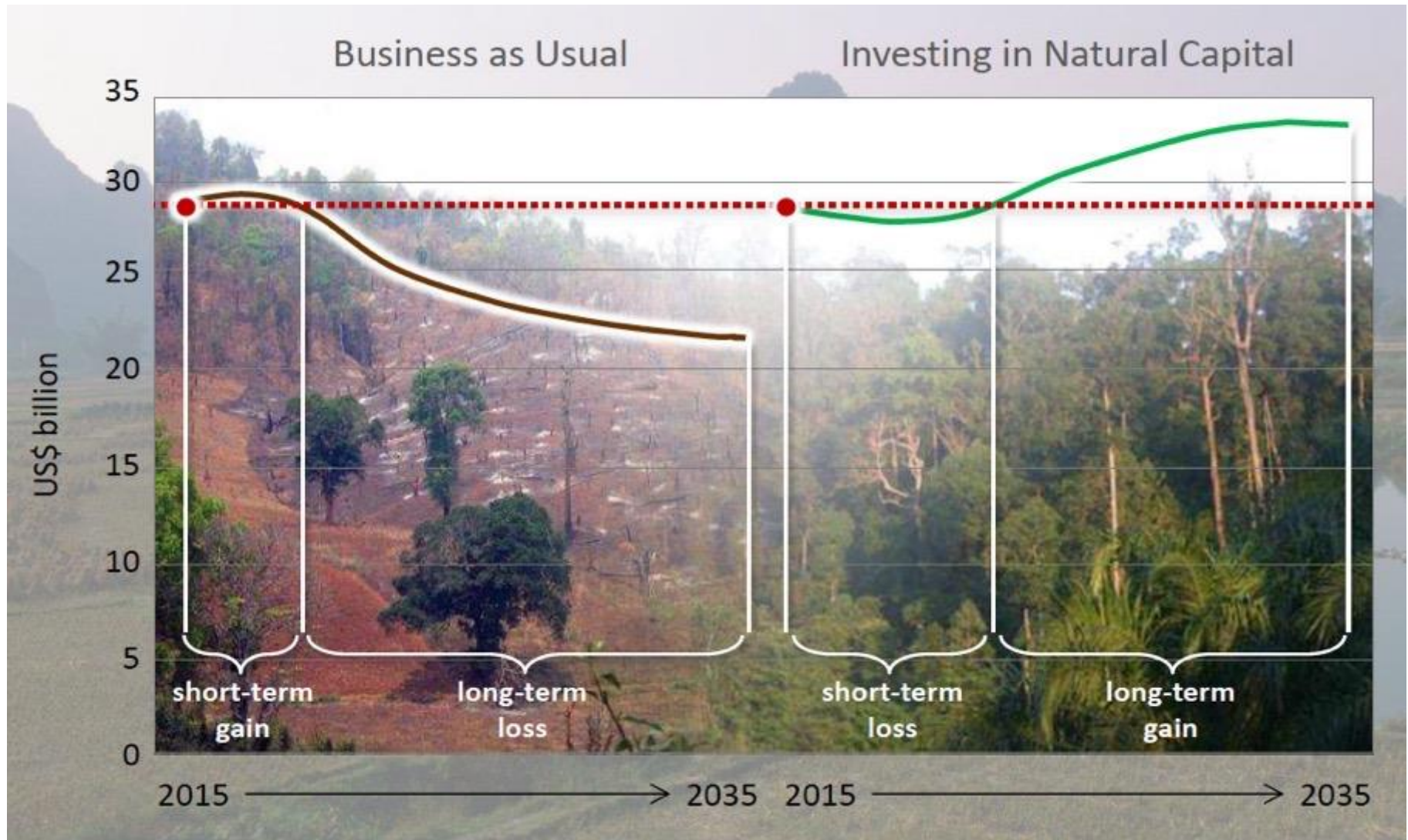


...in order to measurably improve and sustain human well-being.

Natural Capital Wealth Greater Mekong Region



The problem is lack of economic valuation and short vs. long term gain



DRIVERS OF NATURAL CAPITAL LOSS



DEFORESTATION



WATER DIVERSION



OVERFISHING

OUR STRATEGY

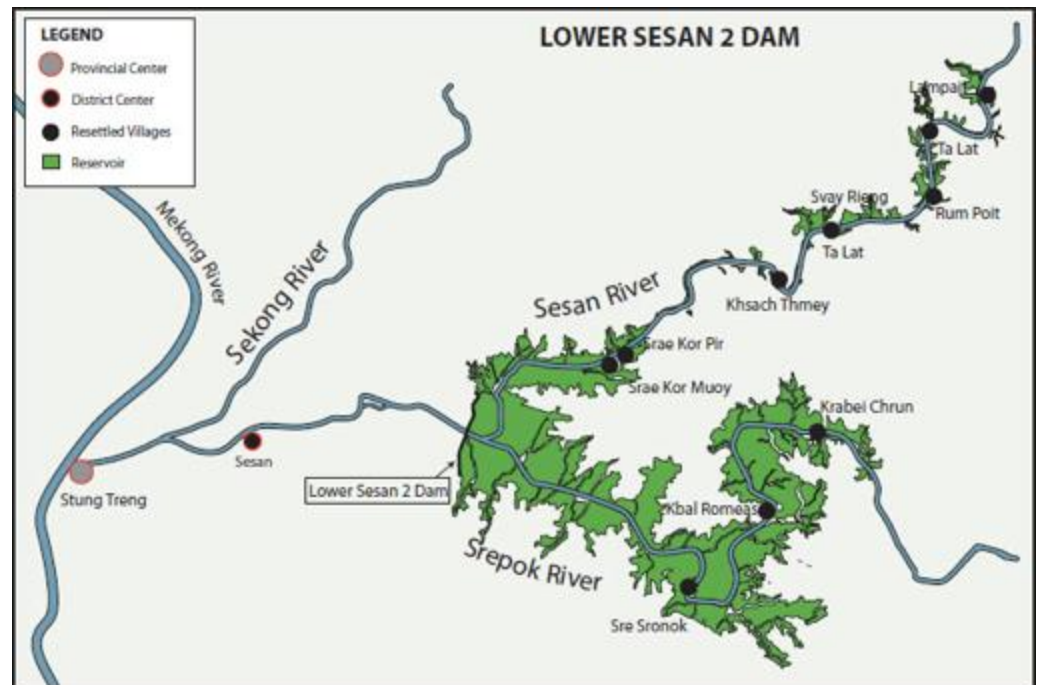
- Protect the best 20% or 6 million hectares of natural ecosystems in the Greater Mekong watershed
- Most important for maintaining water flows, forest cover, and biodiversity that benefit the well-being of the Greater Mekong's people





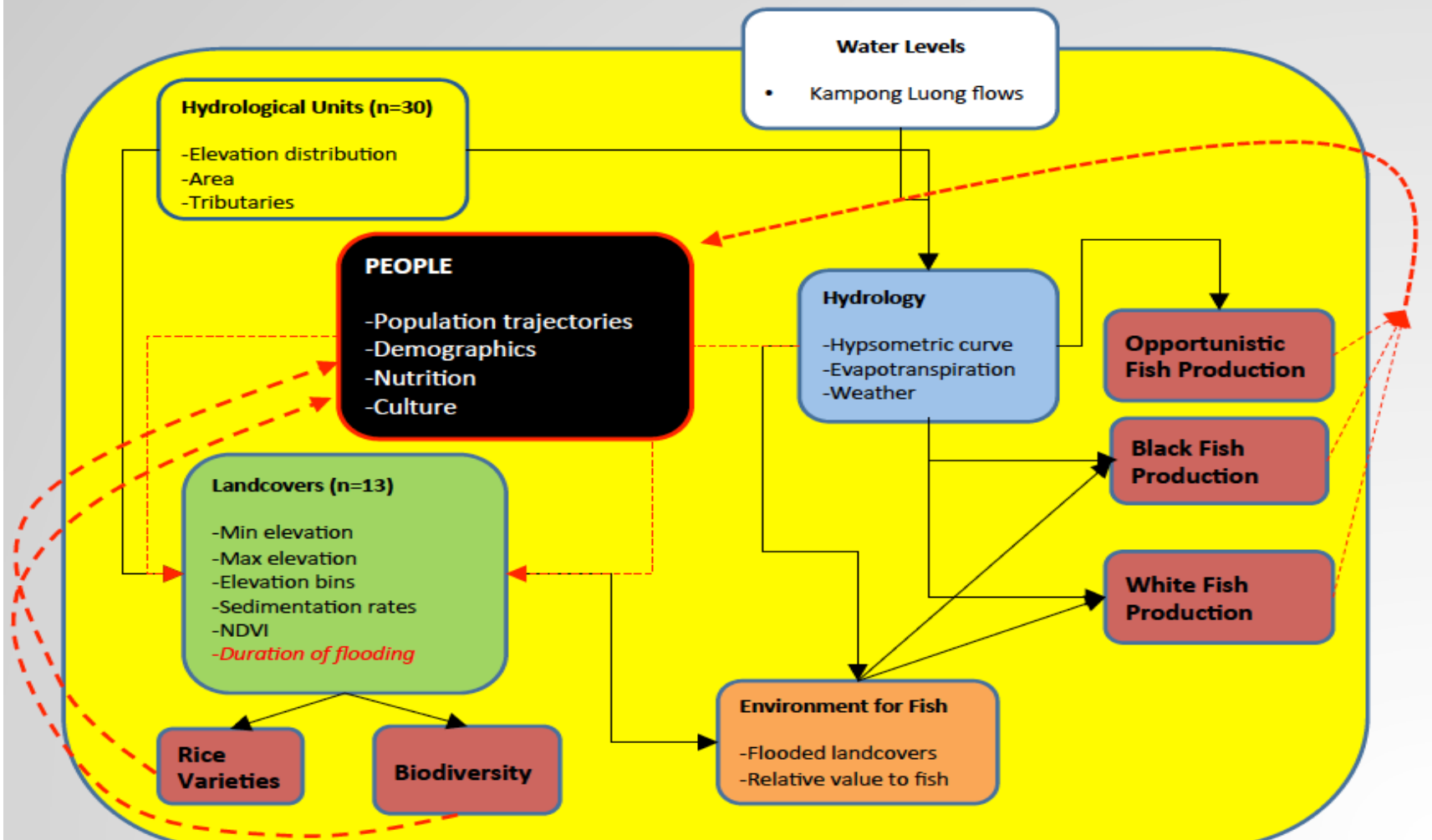
- Protect the water tower
- Keep the water flowing
- Secure the primary food source

INFRASTRUCTURE PLANNING

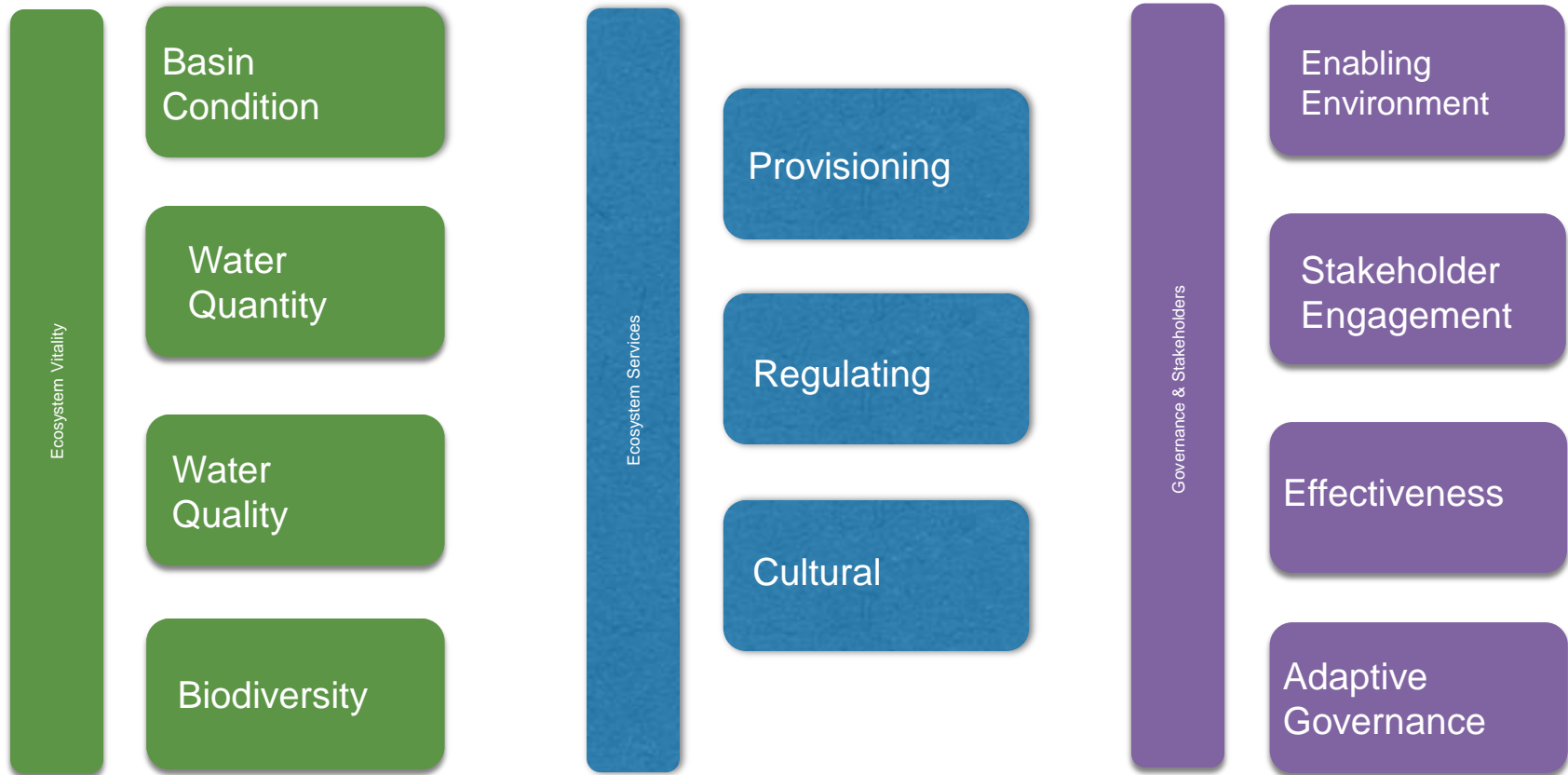


Make trade-off data accessible and useable by key decision makers

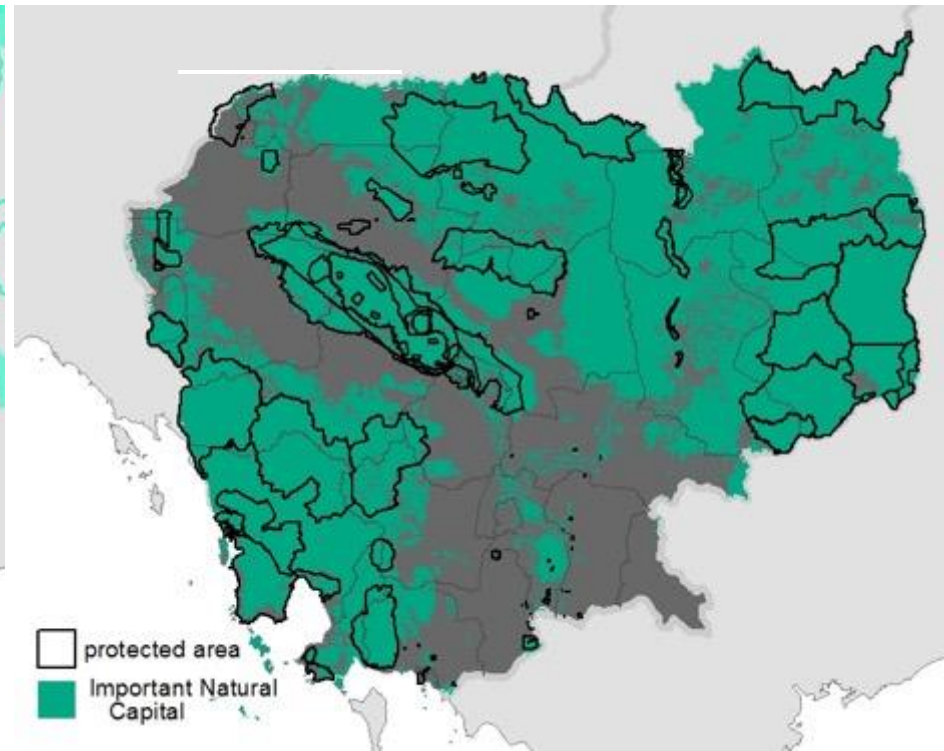
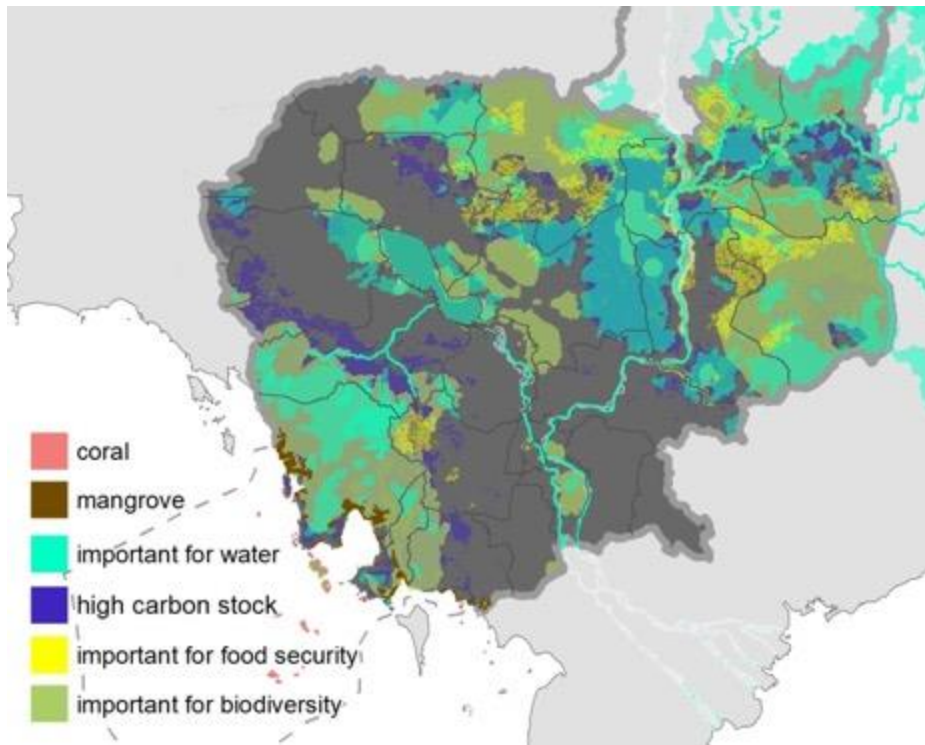
Tonle Sap Integrated Modeling: Design and Methods



Assess and monitor impacts on natural capital using consistent indicators

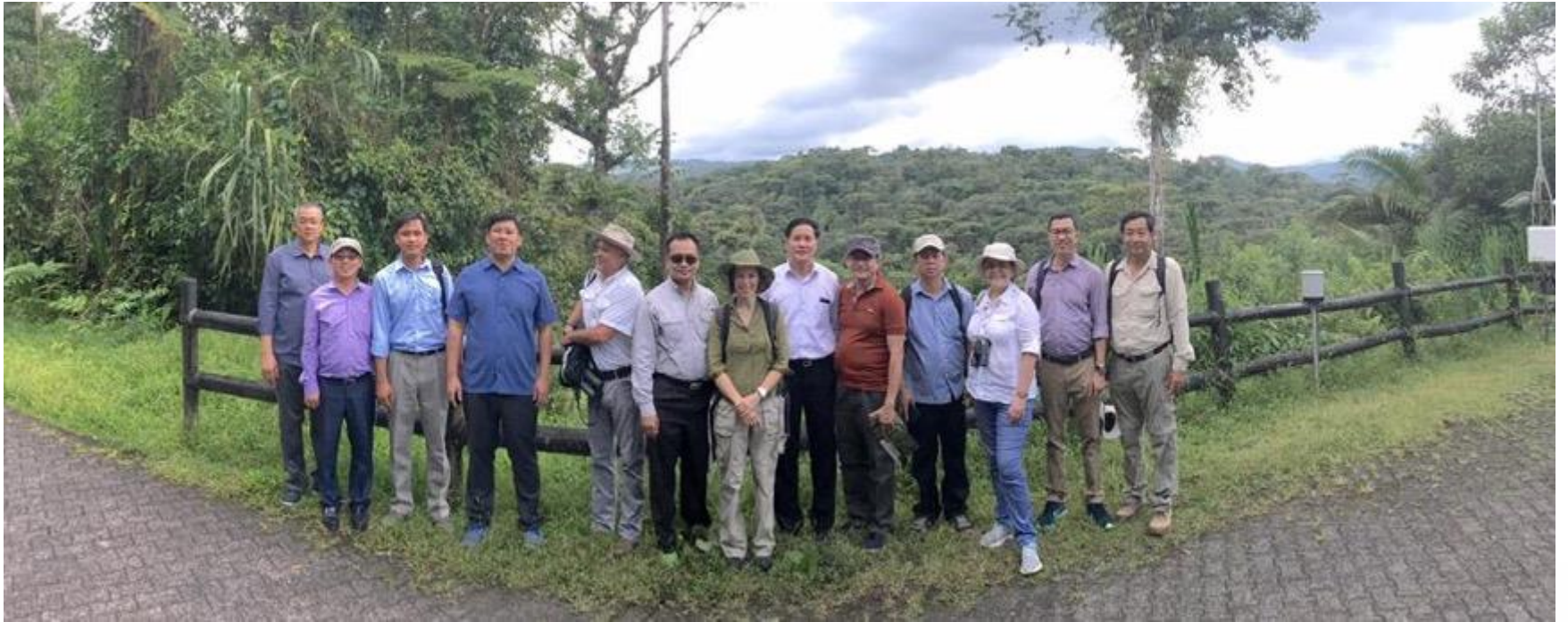


Target natural capital areas to direct protection, restoration and valuation efforts



Important natural capital combined (left) overlaid with areas with protected status (right)

NATIONAL PES PROGRAM & PILOTS



Host South-South exchanges: Costa Rica example

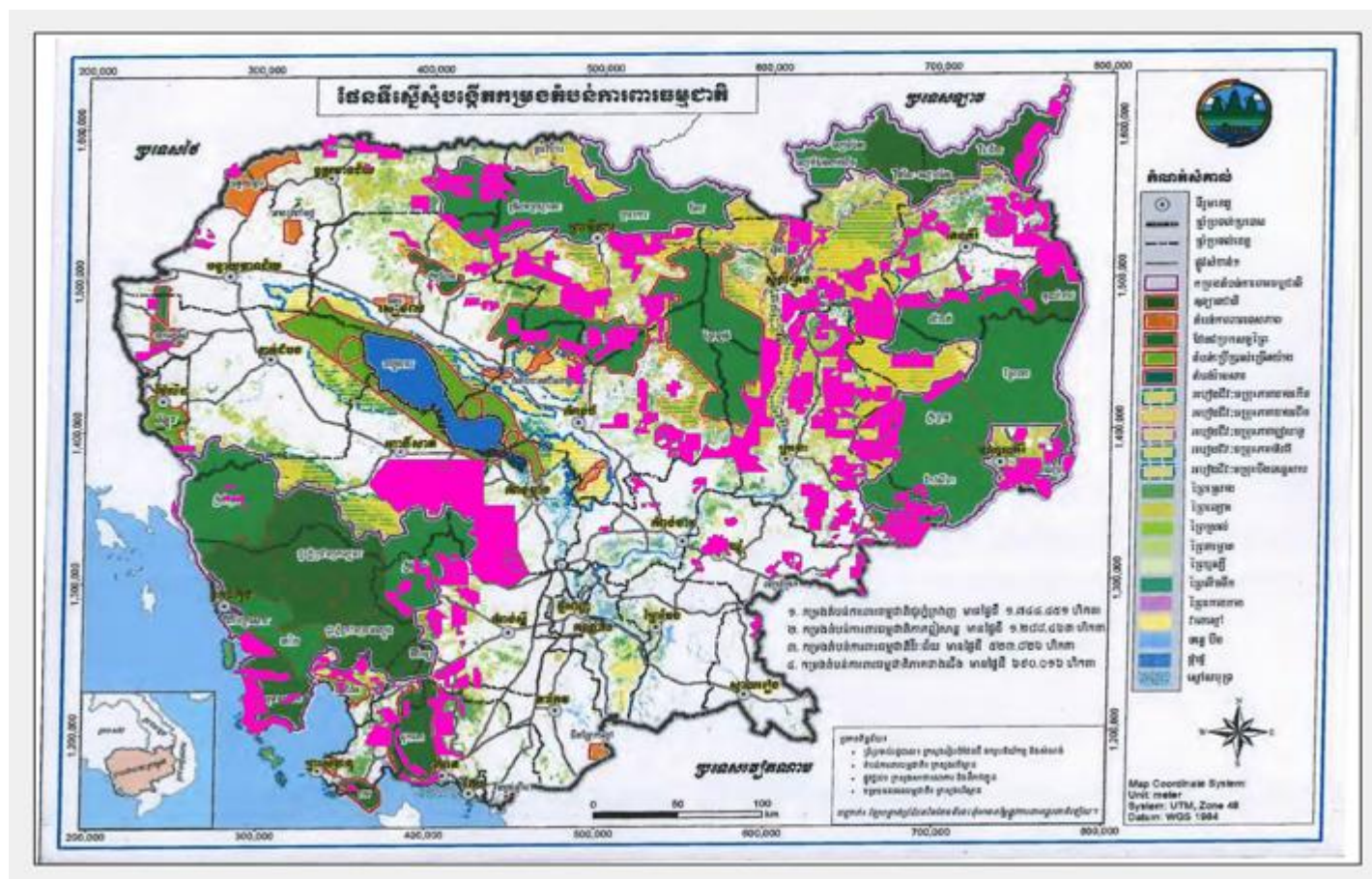


1986
GDP/pc: \$3,574.19
Forest cover: 21%
Population: 2.7 million



2012
GDP/pc: \$9,219.00
Forest Cover: 52%
Population: 5 million

SUSTAINABLE FINANCING/THREAT REDUCTION



Set up natural capital accounting

The cover of the 'System of Environmental-Economic Accounting 2012 Central Framework' features a dark blue background with a stylized graphic of a globe and concentric arcs in light blue and green at the bottom.

System of Environmental-Economic Accounting 2012 Central Framework

The cover of the 'System of Environmental-Economic Accounting 2012 Experimental Ecosystem Accounting' has a blue background with a binary code pattern and a stylized tree branch.

System of Environmental-Economic Accounting 2012 Experimental Ecosystem Accounting

‘Framework for interactions between the economy and the environment, and for describing stocks and changes in stocks of environmental assets’ (SEEA, 2012)



United Nations



European Commission



Food and Agriculture
Organisation
of the
United Nations



International
Monetary
Fund



Organisation for
Economic Co-operation
and Development



The World Bank

White cover publication, pre-edited text subject to official editing

European Commission • Organisation for Economic Co-operation and Development
• United Nations • World Bank

CONSERVATION
INTERNATIONAL



Natural capital capacity building



- Natural capital assessments & valuation.
- Translate information into development decisions.
- Monitor indicator trends over time and include into SDGs
- Set up regional training and South South PES/natural capital exchanges
- Financial structures and supporting policy

Thank you!



tfarrell@conservation.org