



**GREATER MEKONG
SUBREGION
CORE ENVIRONMENT
PROGRAM**

Introduction to TBL Forum

Michael Green: Technical Program Head
Sumit Pokhrel: Deputy Technical Program Head

GMS Environment Operations Center (EOC)

Context

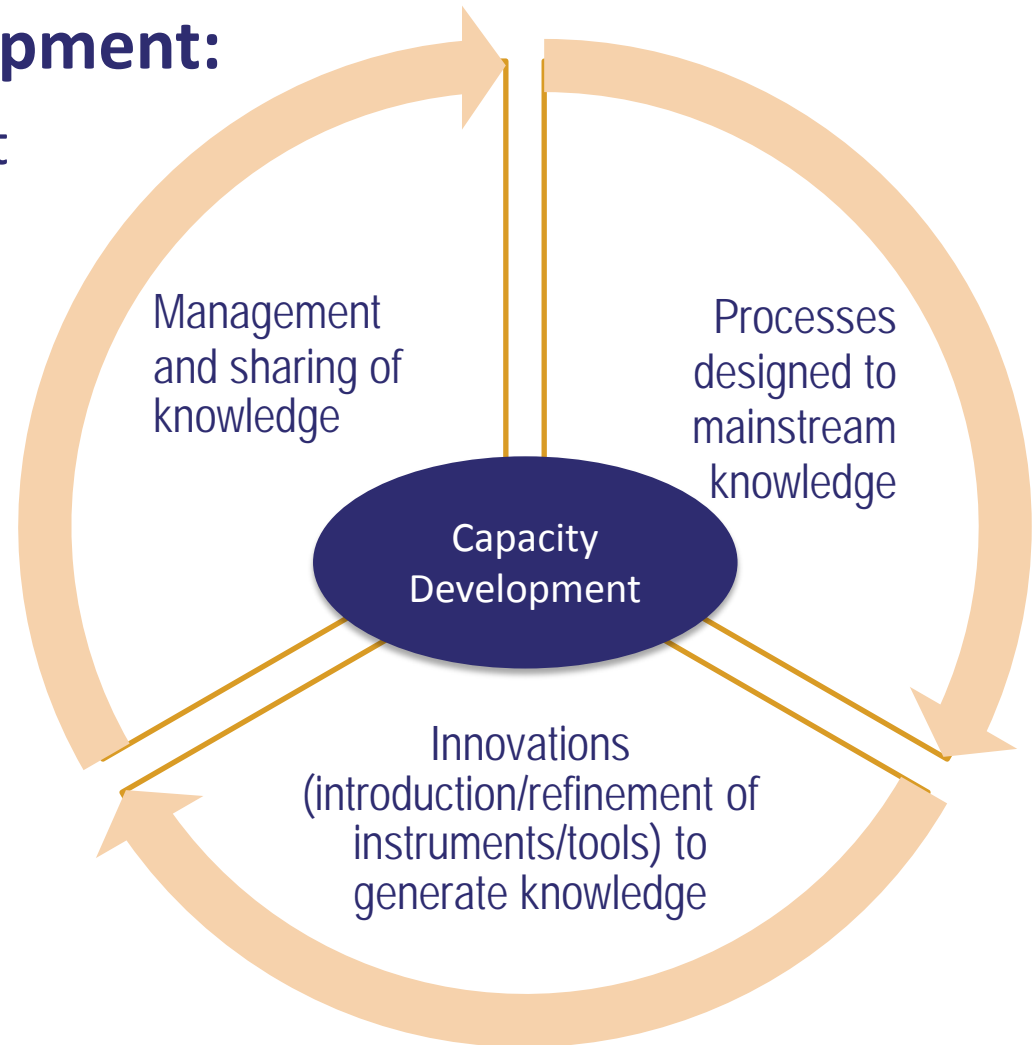
Unique Features

- Clear geographic focus: Transboundary biodiversity landscapes (TBLs)
- Strongly embedded in regional cooperation and national development processes
- Network and convening ability: Broad-based partnership
- Holistic: top down, bottom up

CEP's conceptual approach...

... to capacity development:

- enabling environment
- institutional
- human resource
- financial resource





CEP: Knowledge management

Knowledge mainstream

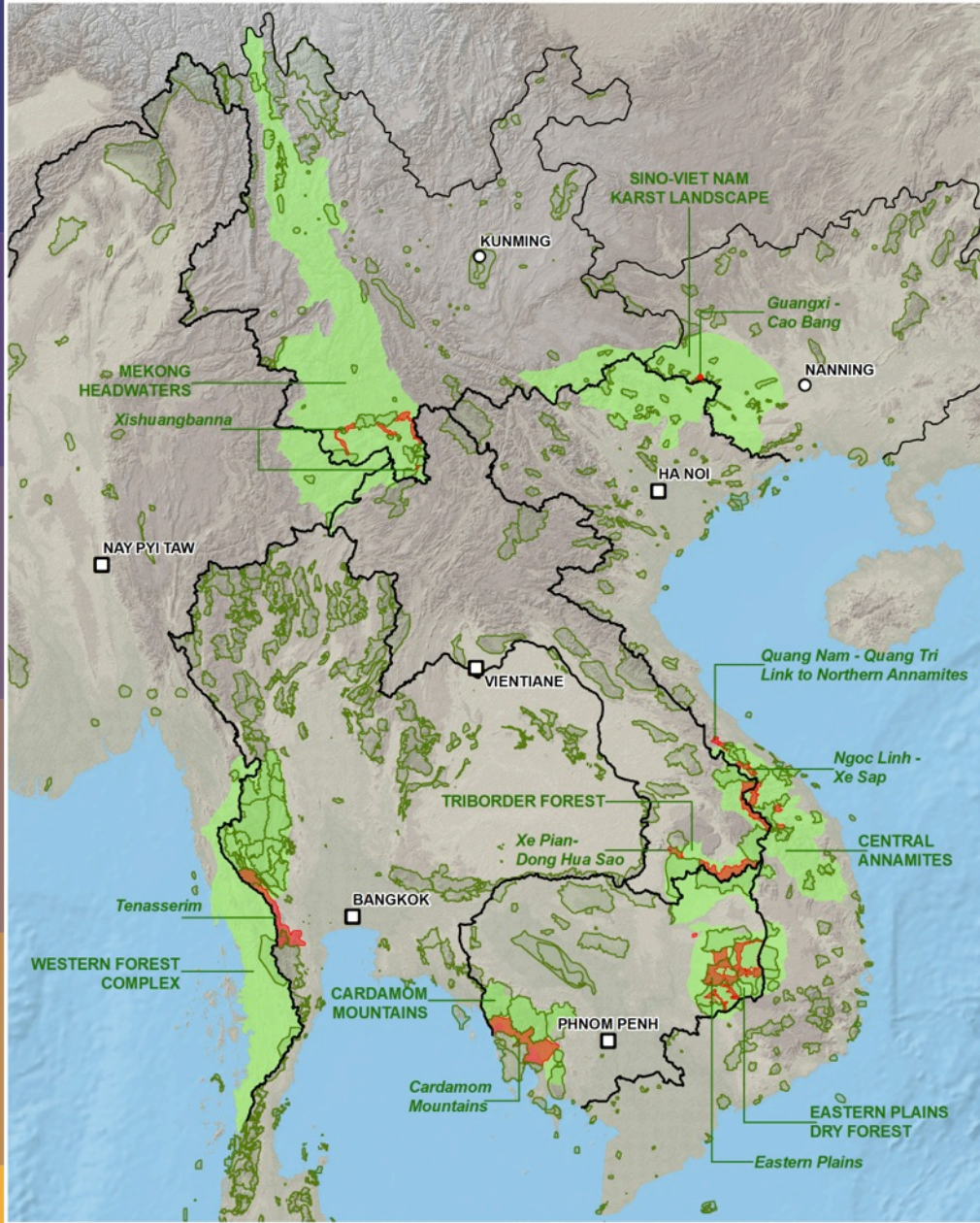
- Regional collaboration
- Cross-sectoral coordination
- Foster policy-science linkages

Knowledge organization and dissemination

- Online library
- Online indicator portal and interactive maps
- Knowledge exchange events

Knowledge generation through network

- Mainstreaming tools and approaches
- Incubation of innovations (feasibility studies, pilots)



Protected Area

BCI corridor

TRANSBOUNDARY BIODIVERSITY LANDSCAPES

Capital city

Province capital (PR China)

National border

Province border (PR China)

0 70 140 280 Km



Boundaries are not necessarily authoritative.



ADB

GREATER MEKONG
SUBREGION
CORE ENVIRONMENT
PROGRAM

Institutionalization of TBL



Top Down Process

1. Convention / Treaty /
Umbrella Agreement



2. Protocol / Technical Annex



3. Ratification and National
level enabling law and
regulation



4. Provincial / Prefecture level
discussion on regulatory
framework and approval

Bottom Up Process (CEP)

4. Regional mechanism (e.g. TBL
forum)



3. Strengthening national level
regulatory framework (e.g.
Biodiversity corridor decree)



2. Embedding in sub-national
land-use planning

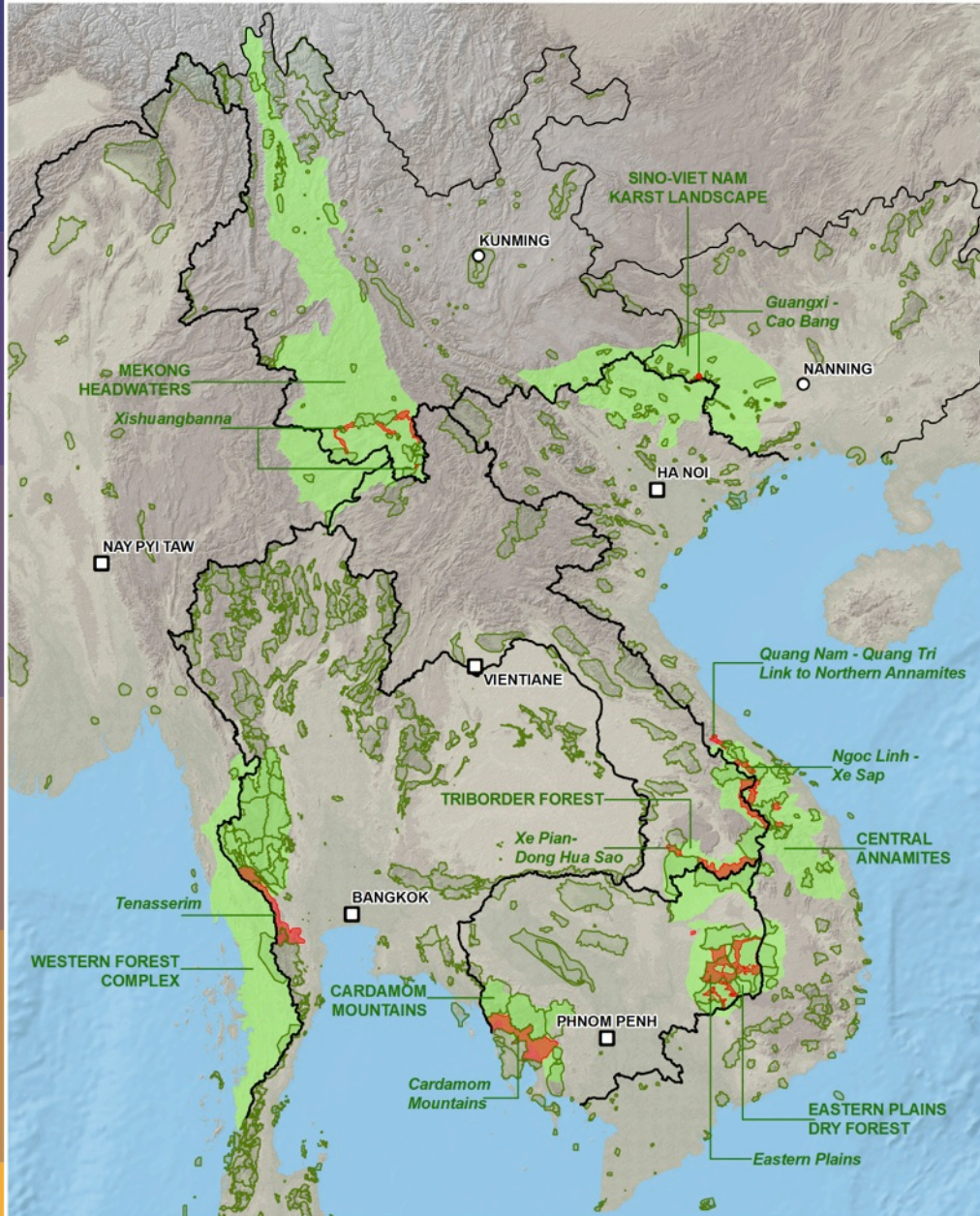


1. Site level zoning to fill
conservation gaps



Mechanism: ??

- Embed TBL knowledge forum in GMS ECP and RIF
 - Secure high level recognition through launching of TBL during the next EMM
- Possible future options to establish a transboundary regulatory framework
 - Charter and/or Stand alone agreement
 - Anchoring in the GMS processes (e.g. CBTA with a separate Protocol)
 - A Memorandum of Understanding building on existing examples



- Protected Area
- BCI corridor
- TRANSBOUNDARY BIODIVERSITY LANDSCAPES
- Capital city
- Province capital (PR China)
- National border
- Province border (PR China)



Boundaries are not necessarily authoritative.



TBL Forum



Function of TBL Forum

Policy outcome: TBL management strategy

- Formulation of pertinent policy questions
- Support identification of appropriate regional, national and sub-national policy/planning entry points
- Mainstreaming TBL in development processes
- Identification of investment gaps and opportunities

Partners: Government and Development partners

Knowledge outcome: exchange of best practices

- Shared understanding of science, processes and tools needed to develop a TBL management strategy
- Common framework and network to monitor environmental performance of investments in TBLs

Partners: Civil society, academia, private sector?



- Embedded in WGE (Chair), facilitated by EOC

Composition of task force:

Maximum size of 15 members:

Policy outcome:

- ✓ 6 WGE nominees (technically competent from relevant government agencies)
- ✓ 1 ex-national planning official (e.g. recently retired)
- ✓ 1 ex-finance ministry official (e.g. recently retired)

Knowledge outcome:

- ✓ 4 civil society and academia representatives
- ✓ 2 socio-economic / local community representatives

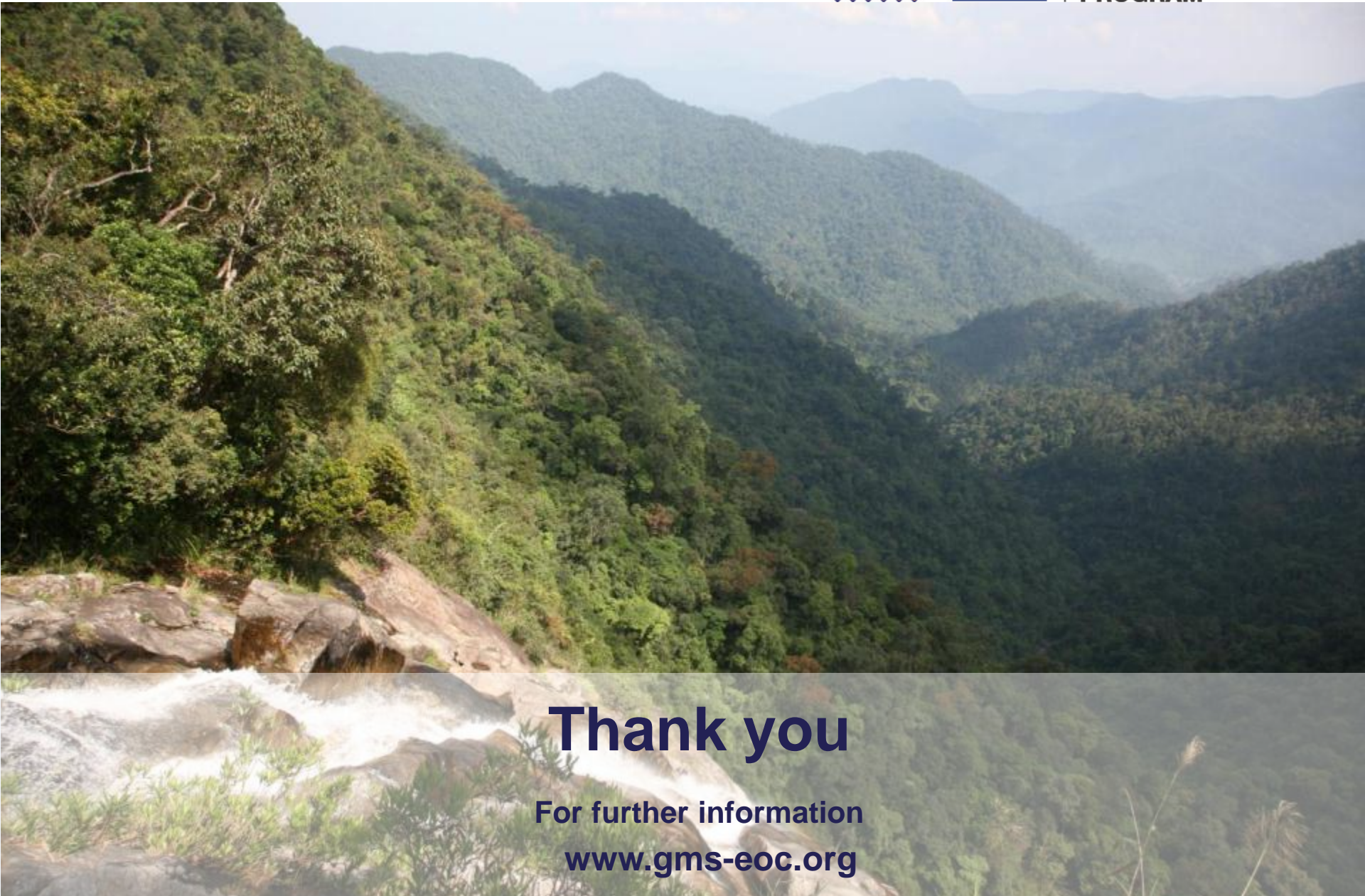
Mechanism:

- ✓ 1 legal expert (transboundary cooperation)

- Other experts co-opted to participate as necessary



**GREATER MEKONG
SUBREGION
CORE ENVIRONMENT
PROGRAM**



Thank you

**For further information
www.gms-eoc.org**