



**GREATER MEKONG
SUBREGION
CORE ENVIRONMENT
PROGRAM**

Transboundary Biodiversity Landscape (TBL) Assessment

TBL Forum
6-7 May, 2014

Jerry Chan: Biodiversity and Landscapes Conservation Specialist

04.08.2012 08:14

GMS Environment Operations Center (EOC)

Contents



**GREATER MEKONG
SUBREGION
CORE ENVIRONMENT
PROGRAM**

1. Background
2. Challenges
3. Strategies
4. Activities
5. Outputs

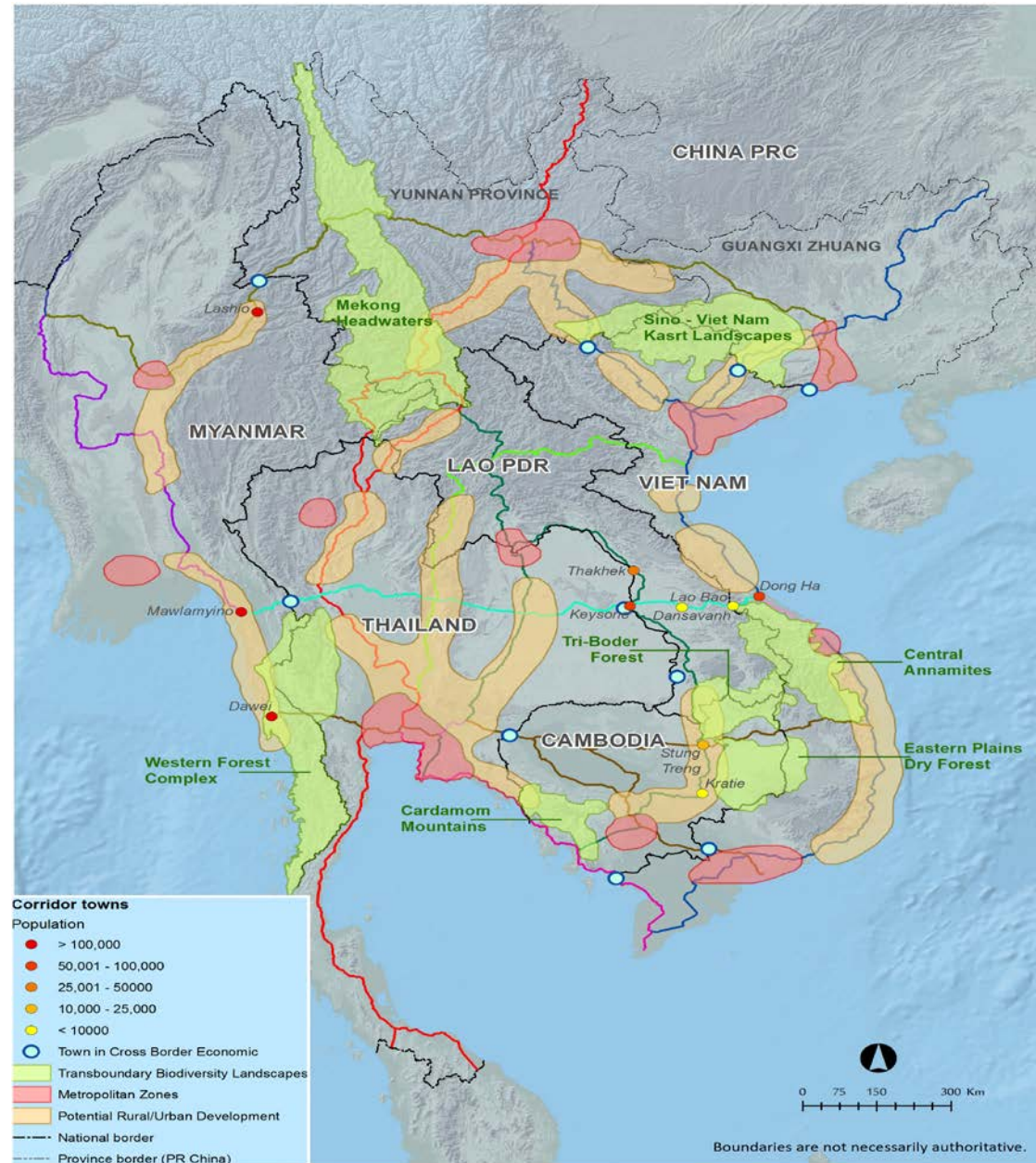
1. Background



- Identified 7 key Transboundary Biodiversity Landscapes (TBLs) in CEP-BCI Phase I

Objective

- Improve TBLs management to sustain the natural capital



2. Challenges



Biodiversity profile ?

No

Social-economic profile?

No

Information system?

No

Monitoring system?

No

Conservation strategies and action plans?

No

TBLs cooperation mechanism?

No

Climate change profile?

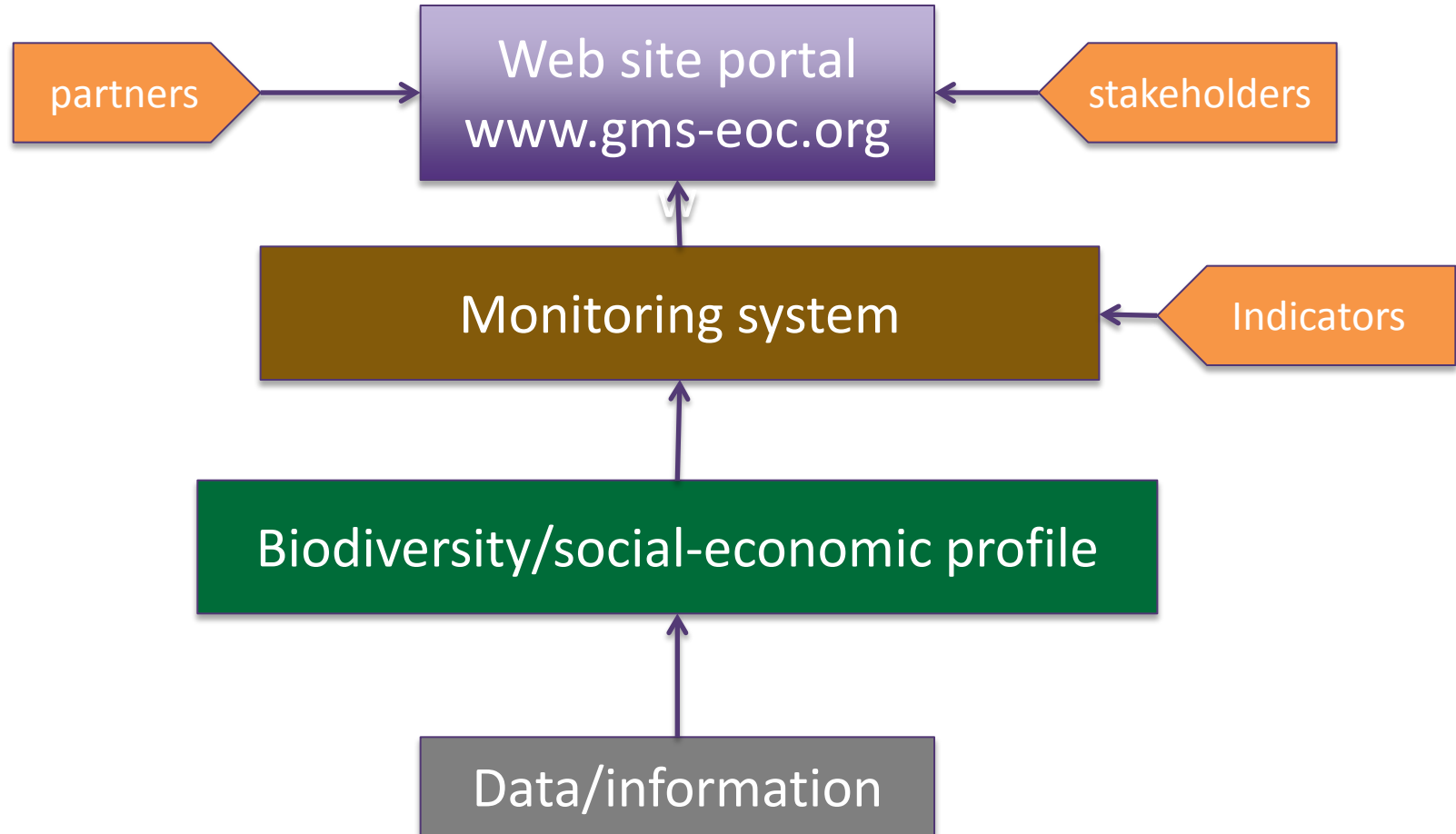
No

3. Strategies



- Profile: Biodiversity and social-economic assessment
- Monitoring system: spatial analysis, indicators
- Conservation strategies and action plan
- Transboundary management/cooperation mechanisms

TBL monitoring system



4. Activities



1. Procure a consulting firm through ADB system
2. Establish cooperation and knowledge sharing mechanism
3. Identify methodologies
4. Conduct TBLs assessment
5. Establish framework and mechanisms for monitoring

4. Activities - continue



Objective 1. Develop TBLs management strategy

- Update biodiversity, social-economic profile
- Identify conservation areas with spatial analysis
- Develop management strategy

Objective 2. Mainstream strategy

- Mainstream TBL strategy

Objective 3. Establish monitoring framework/mechanism

- Identify indicators
- Establish framework
- Set up database
- Regional knowledge sharing mechanism

5. Outputs



1. Biodiversity and social-economic profile for each TBL;
2. Identified conservation gaps, key protected targets, key ecosystem and functions, identified key threats and sources, linkage with land use and development;
3. TBL conservation strategies and management plan;
4. Monitoring system which integrated with EOC EIS;
5. Knowledge sharing mechanism;
6. Identified technical support team.



ADB

GREATER MEKONG
SUBREGION
CORE ENVIRONMENT
PROGRAM



THANK YOU

www.gms-eoc.org