

# Watershed-Based Adaptation to Climate Change

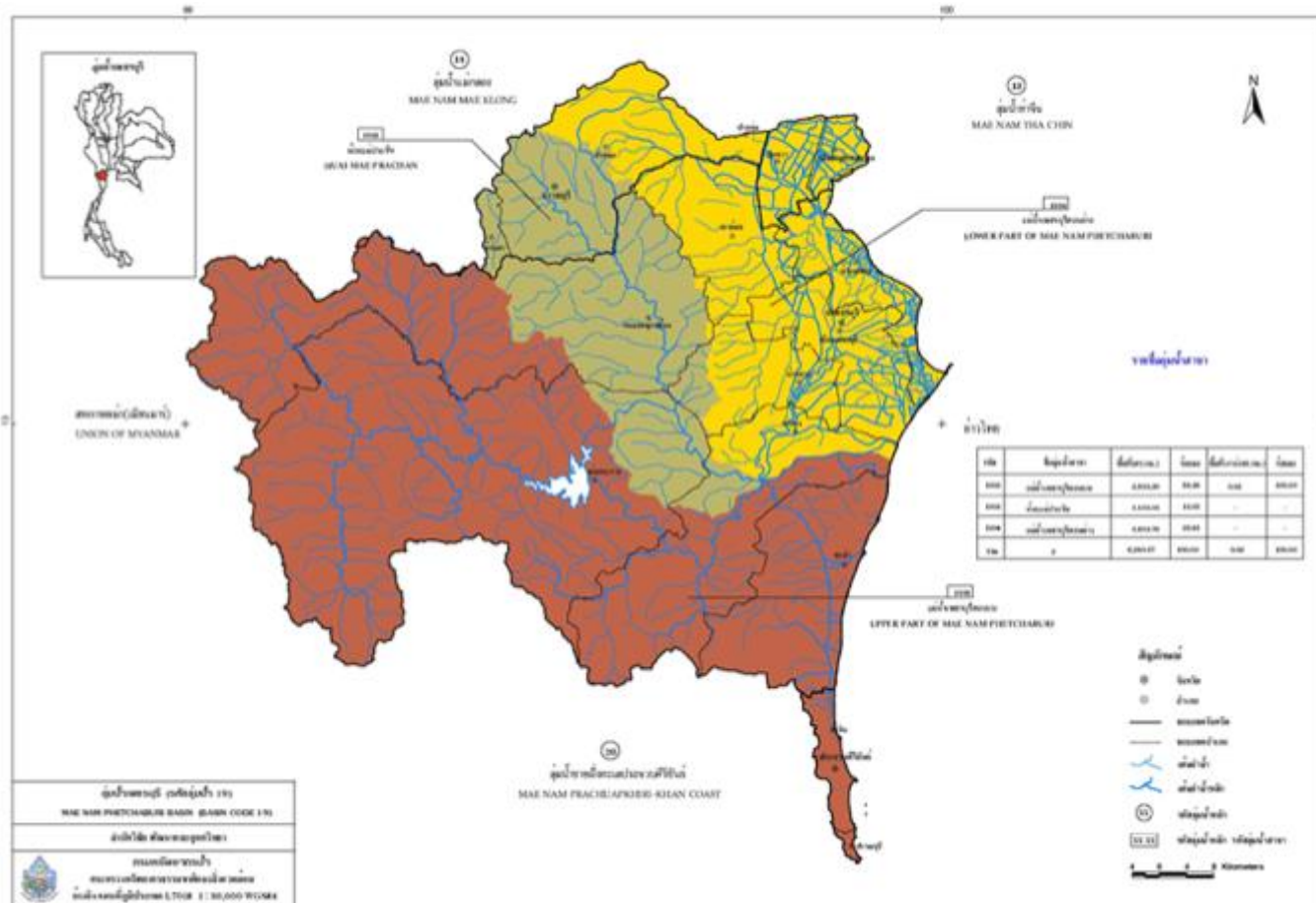
A collaborative initiative of  
USFS, USAID, SDF, SIEP, and the Royal Thai  
Government

# Outline

- Project objectives and rationale
- Project partners
- Project deliverables
- Focus on guidance for watershed VAA
- Roundtable inputs on guidance

# WACC Objectives

- Develop a model VAA for SE Asia watersheds
- Test watershed VAA in SIEP / Petchaburi



# WACC Objectives

- Develop a model VAA for SE Asia watersheds
- Test watershed VAA in SIEP / Petchaburi
- Build capacity to undertake VAAs in watersheds
- Inform decisions about watershed development and conservation in response to climate change

# WACC Rationale

- CC impacts on water flows a principal concern → focus on watersheds
- Integrated VAAs complex, but needed
- Integrated VAAs can assess concerns of multiple stakeholders
- Merge best from existing VAAs
- Good VAA prerequisite for climate finance



# WACC Partners

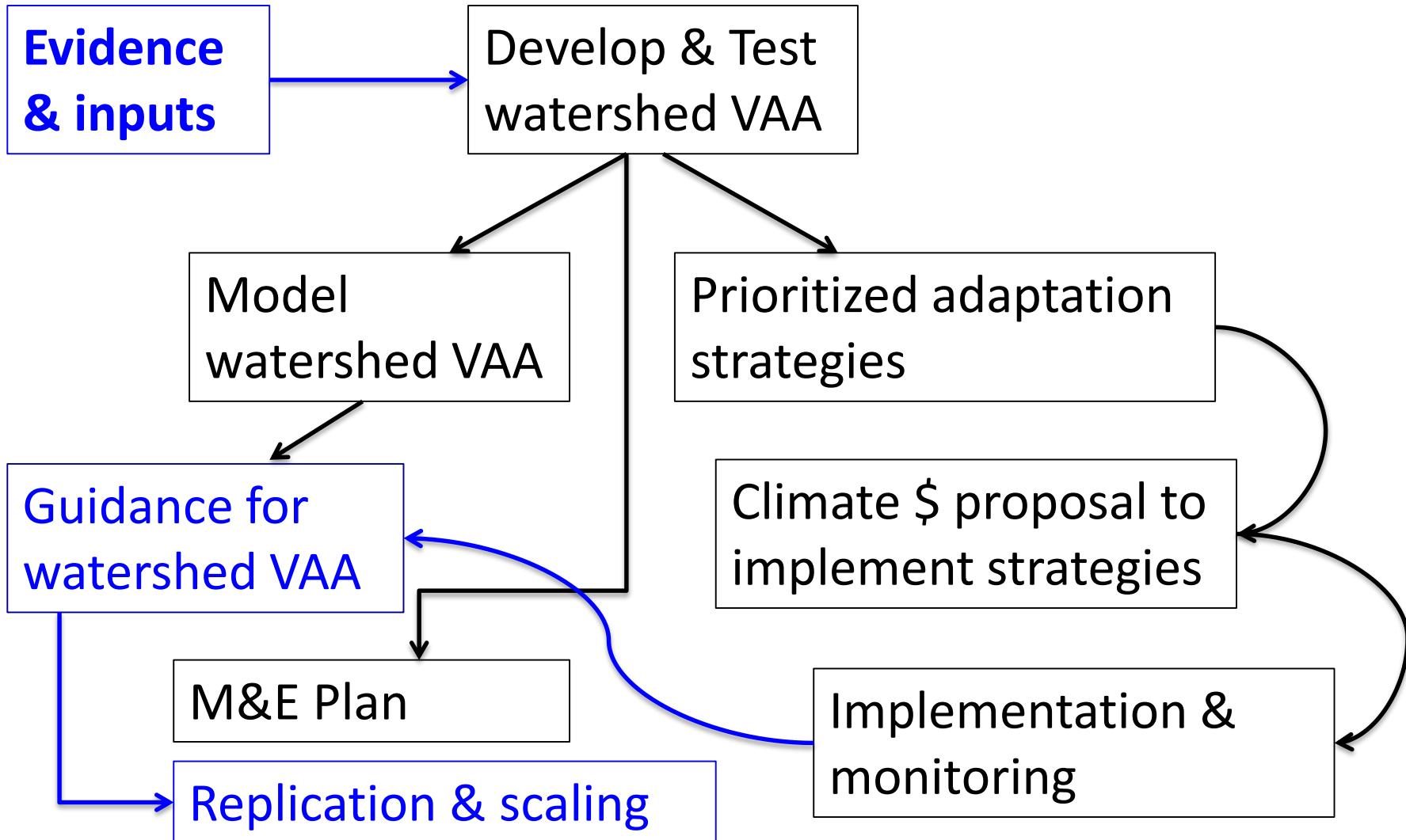
## Thai Colleagues

- NRCT – Project management, coordination and funding
- RU – climate downscaling, WEAP modeling
- SDF – stakeholder consultations
- SIEP – land cover mapping, biodiversity assessments
- LDD – land use and land suitability mapping

## USG

- USAID ADAPT – project design, support to NRCT, and Cambodia & Vietnam
- USFS – technical support

# WACC Conceptual Design

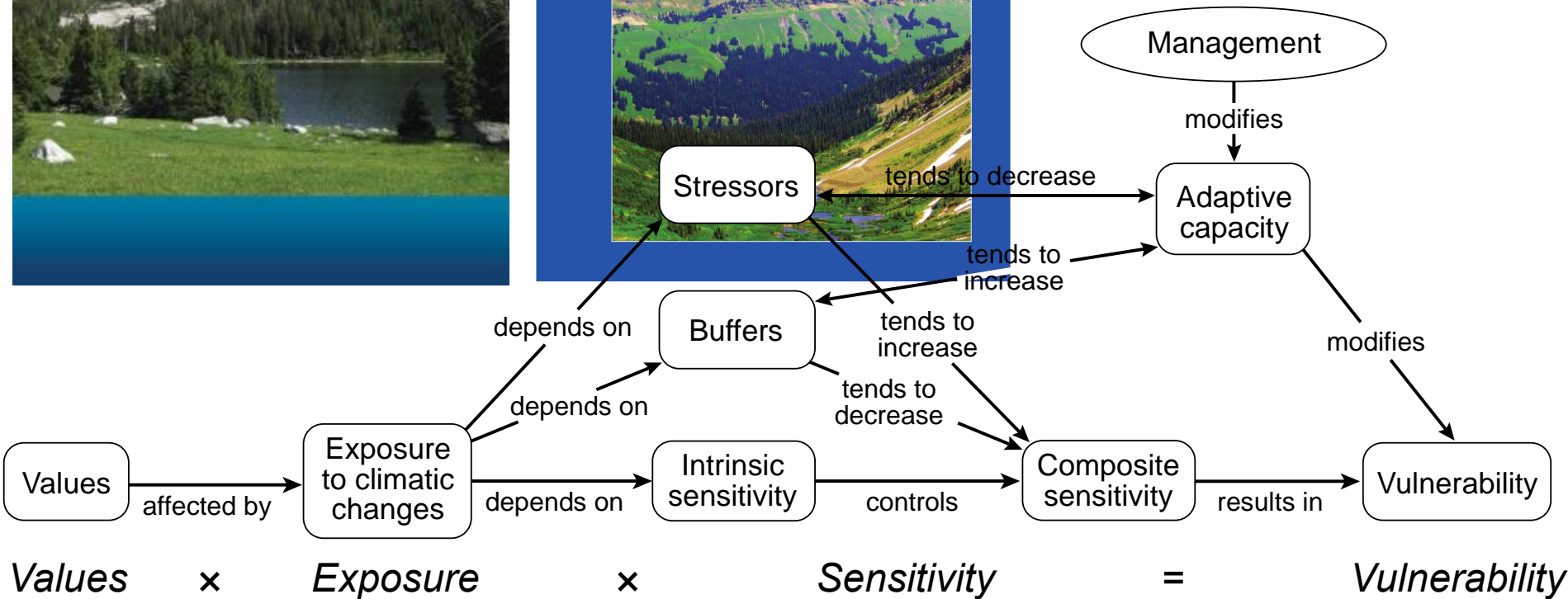
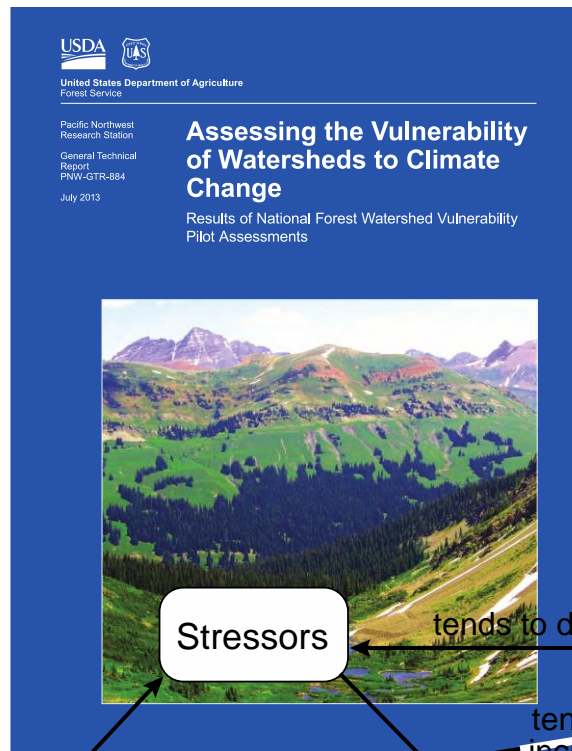
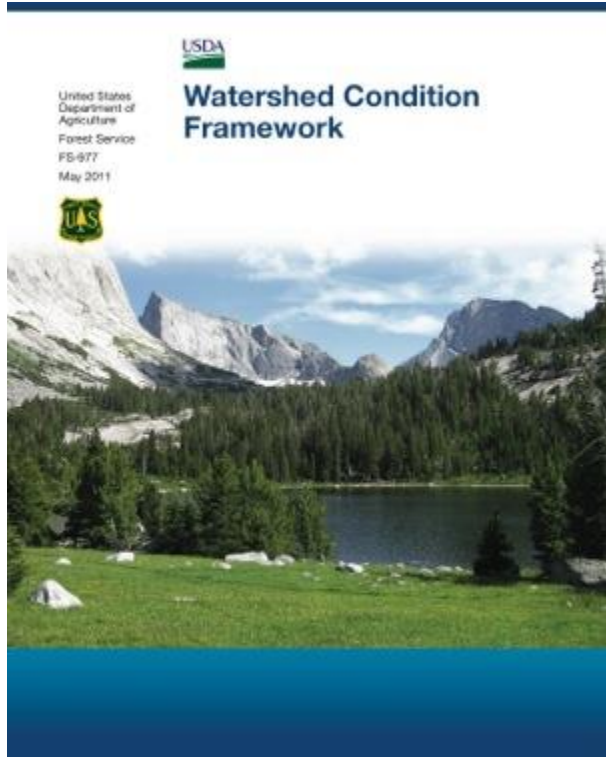


# WACC Deliverables

- VAA for Petchaburi watershed
- **Guidance on watershed-based VAA approach**
- International Conference
- Interpretive program / exhibits at SIEP
- Outline for training program



# WACC Guidance – USFS Inputs



# WACC Guidance – Other Inputs

## ADB CEP Framework

- Socioeconomic context
- Current risk & vulnerability
- Formulate plausible future(s)
- Future risks & vulnerabilities
- Adaptation strategies
- ID options to implement strategies

## SDF Framework

- Background Information (socio-economic context, bio-physical characteristics, resource use, current concerns, etc.)
- ID factors affecting future
- CC vulnerabilities (physical, social, infrastructure, etc.)
- Adaptation options analysis

**Some Common Elements:** Top-down + bottom-up analyses → shared understanding → adaptation options → cost & sustainability analysis

# WACC Guidance – Possible Structure

- Overview & Rationale (value of regional framework)
- Framework / Stepwise explanation of approach
- SIEP Case Study
- Other case studies from region

# WACC Guidance – Roundtable Inputs

- How can guidance best incorporate evidence from existing VAAs in the region?
- Who should it target?